

### **Who is doing the work?**

The Marin Wildfire Prevention Authority (Marin Wildfire) is funding treatments conducted along roads by Marin County Fire Department (MCFD), Inverness Public Utilities District (IPUD), Bolinas Fire Protection District (BFPD), Stinson Beach Fire Protection District (SBFPD), and Muir Beach Volunteer Fire Department/ Muir Beach Community Services District (MBCSD). This project is an expansion of the West Marin Zone Evacuation Route Project that was approved in 2021.

Please note that PG&E may be conducting vegetation treatment in some of the same area, but these activities are not affiliated with Marin Wildfire-funded projects.

### **What activities are taking place and why?**

Invasive, non-native, and fire-hazardous vegetation and accumulated dead biomass would be reduced typically within 10 feet from the road edge, up to 25 feet. Areas where fuel treatments may need to extend beyond 10 feet from the edge of the road would be determined by a qualified professional who understands forest ecology and fuel management or a fire professional, prior to treatments. The types of topographical features (e.g., steep slopes) or vegetation fuels (e.g., dense eucalyptus or broom) present may necessitate greater treatment distances beyond 10 feet. Small trees, 8 inches diameter at breast height (DBH) and smaller, would be removed as part of treatments for ingress and egress and ladder fuel removal. In areas with eucalyptus or other fire-hazardous invasive trees, removal of trees up to 10 inches DBH may be performed. Hazardous trees (e.g., dead or dying trees) identified by an arborist or qualified fire professional may also be removed along this evacuation route. No healthy, mature, scenic trees would be removed under this proposed project.

The local fire agencies are conducting roadside treatments within their jurisdiction (private, public/non-county maintained roads, and public roads) to comply with the applicable fire code (Marin County Fire Code Title 16, Section 322.6.1) and to improve vegetation clearance to provide better access for first responders and emergency vehicles. The roadside treatments also improve evacuation and ingress/egress throughout the communities in coastal Marin for safer evacuation for residents and visitors. The coastal fire agencies implementing roadside treatments are complying with all requirements set forth in environmental compliance documents (including the California Environmental Quality Act [CEQA] documents and Marin County coastal requirements).

### **Where is work happening?**

The first phase of this project will occur in November 2024 along East/West Robert Drives and North/South Dream Farm Roads, managed by MCFD.



The next phase of this project will occur in later during the fall and winter 2024/25 along Woodhaven, Kehoe Way, Rannoch Way, and Stirling Way within IPUD jurisdiction and managed by MCFD.

Future areas of treatment will include small segments of many roads in Bolinas and some roadways in Muir Beach.

### **What are you doing to protect sensitive wildlife and plants?**

Biologists have already mapped all sensitive habitats within the project area and will be conducting pre-treatment surveys and flagging sensitive resources for either full avoidance or modified treatment. Environmental awareness training is required for any contractor working on the project to ensure all resources are protected.

Biologists have conducted surveys in some portions of the project area where Northern Spotted Owl were known to occur. These surveys, combined with maps of previous owl activity, will help ensure no activities take place that would disturb this species. Additional nesting bird surveys take place ahead of any work during the nesting season.

### **What does the fire code say?**

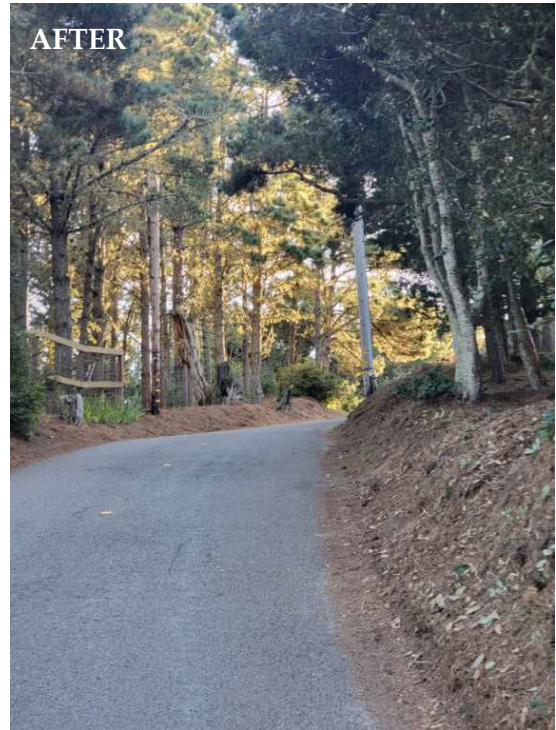
**Marin County Code, Title 16, Fire: Section 325.6.1 Clearance of brush or vegetative growth from street.** "The fire code official is authorized to require, within 10 feet on each side and 15 feet in height of fire apparatus roads and driveways, to be abated of flammable vegetation and other combustible growth.

*Exception:* Single specimens of trees, ornamental vegetative fuels or cultivated ground cover, such as green grass, ivy succulents or similar plants used a ground cover, provided that they do not form a means of readily transmitting fire and not lower than 15 feet vertical clearance in height from the roadway surface."

While the regulations provide authorization for the fire code official to require treatment within 10 feet of road edge, fire agencies have jurisdiction to recommend and implement vegetation treatment activities further from 10 feet on each side of the roadway.



**What does this work look like?**



The photos above show conditions before and after a crew completed work along a road in the Inverness area in November/December 2022. Biologists first walked the project area and flagged anything the crew needed to avoid. Then the crew limbed up trees with branches that would impede first responder vehicles and trimmed back shrubs next to the road that would create dangerous conditions during a wildfire.

**Where do I go for more information?**

Navigate to the project webpage on: [www.marinwildfire.org](http://www.marinwildfire.org) or email: [fire@invernesspud.org](mailto:fire@invernesspud.org)

